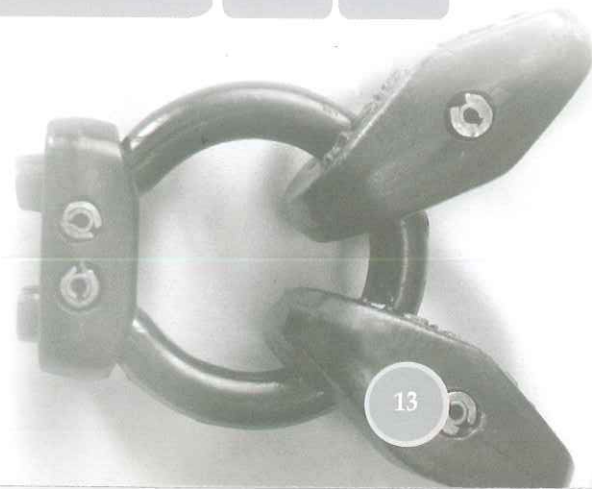


	PARÇA ADI PART NAME	TİP TYPE	PARÇA KODU PART NO
1	Bakla Kilit Takımı Repair Link Kit	X 12 X 14 X 16 X 18 X 20	0101
a	Kilit Baklası Repair Link	X 12 X 14 X 16 X 18 X 20	0102
b	Kilit İçi Locking Plug	X 16 X 18 X 20	0103
c	Kalın-Ince Pim Roll Pins	X 12 X 14 X 16 X 18 X 20	0104
2	Halka Kilit Takımı Repair Ring Kit	X 12 X 14 X 16 X 18 X 20	0201
a	Kilit Halkası Repair Ring	X 12 X 14 X 16 X 18 X 20	0202
b	Pabuç Tag	X 12 X 14 X 16 X 18 X 20	0203
c	Pim Roll Pins	X 12 X 14 X 16 X 18 X 20	0204
3	Açık Halka Connection Ring	X 12 X 14 X 16 X 18 X 20	0301

	PARÇA ADI PART NAME	TİP TYPE	PARÇA KODU PART NO
4	Mapa Shackle	Standart	0506
5	Kilitli Mapa Locking Shackle	Standart	0707
6	Gergi Zinciri Tension Chain	Ölçülü Size Based	0601
7	Kilit Levyesi Link Lever	Standart	0701
8	Pim Çıkarıcı Pin Punch	Ölçülü Size Based	0801



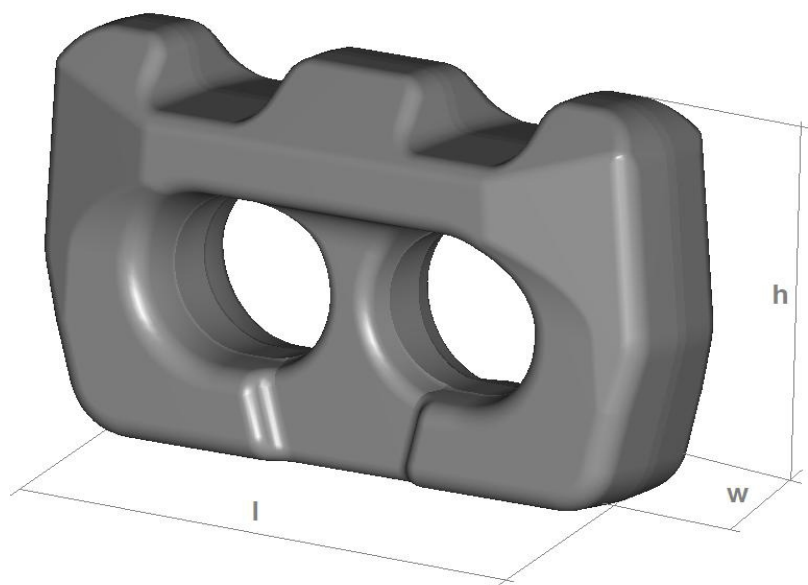


coremaq
reparação de máquinas

TYPE : X16 SUPERSTONE

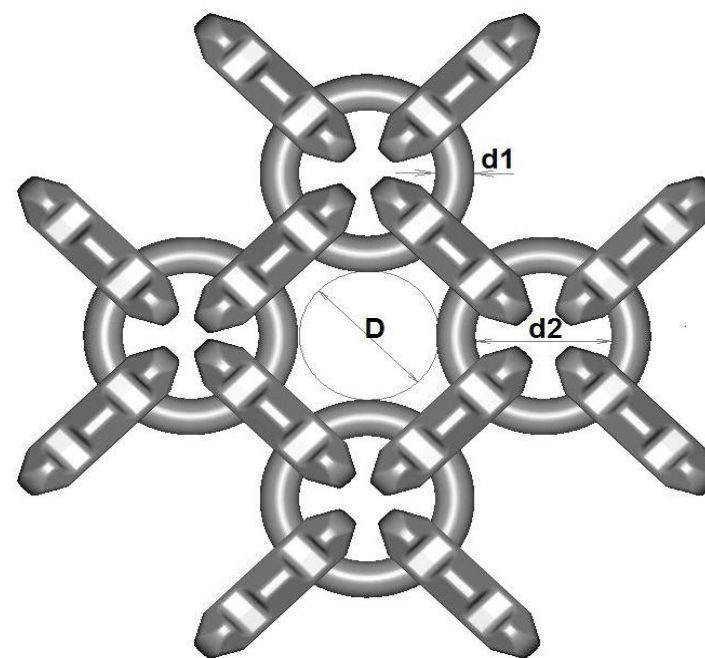
BAKLA
LINK
ESLABON
MAILLON

w : 23 mm
h : 50 mm
l : 81 mm



HALKA
RING
ANILLO
ANNEAU

d1 : 16 mm
d2 : 63 mm
D : 62 mm



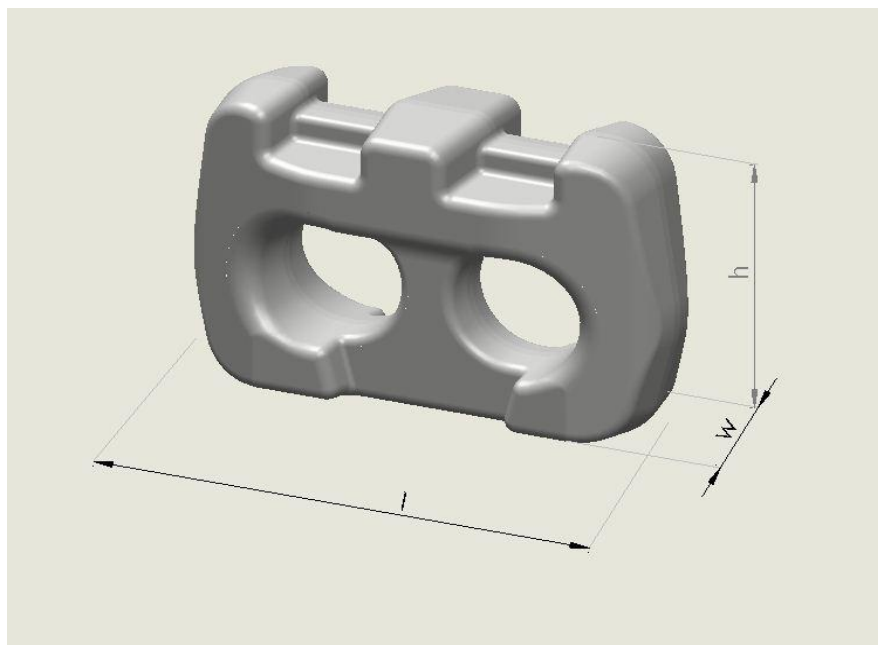


coremaq
reparação de máquinas

TYPE : X18 ROYALROCK

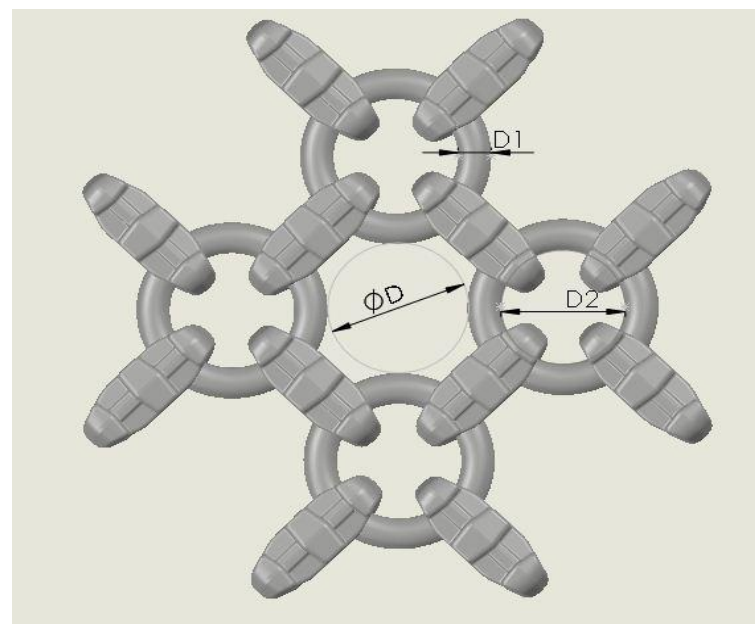
BAKLA
LINK
ESLABON
MAILLON

w : 32 mm
h : 59 mm
l : 90 mm



HALKA
RING
ANILLO
ANNEAU

d1 : 18 mm
d2 : 67 mm
D : 75 mm



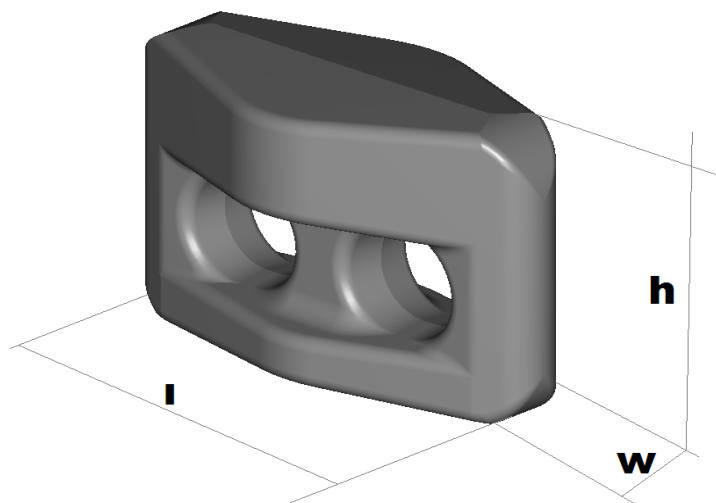


coremaq
reparação de máquinas

TYPE : X18 UNIVERSAL

BAKLA
LINK
ESLABON
MAILLON

w : 49 mm
h : 63 mm
l : 96 mm



HALKA
RING
ANILLO
ANNEAU

d1 : 18 mm
d2 : 66 mm
D : 76 mm

